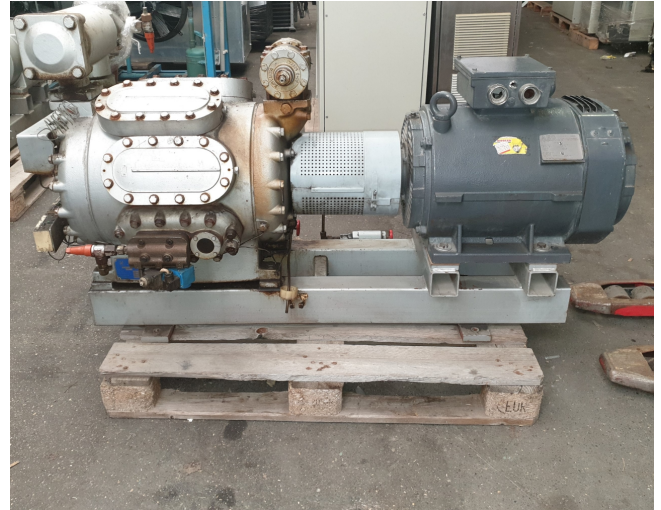


Sabroe CMO 28

Specifications

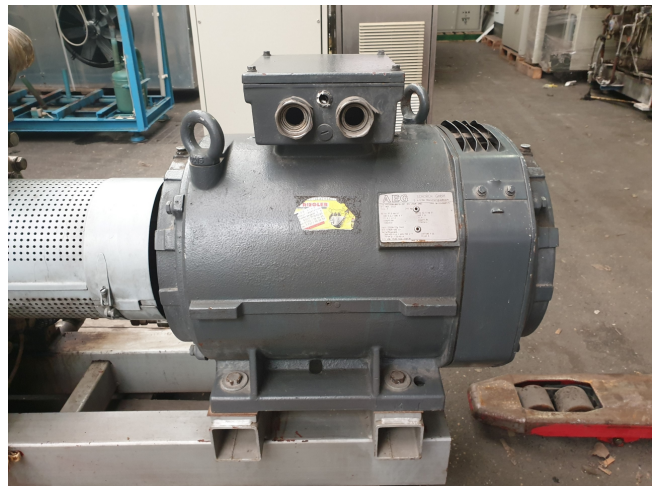
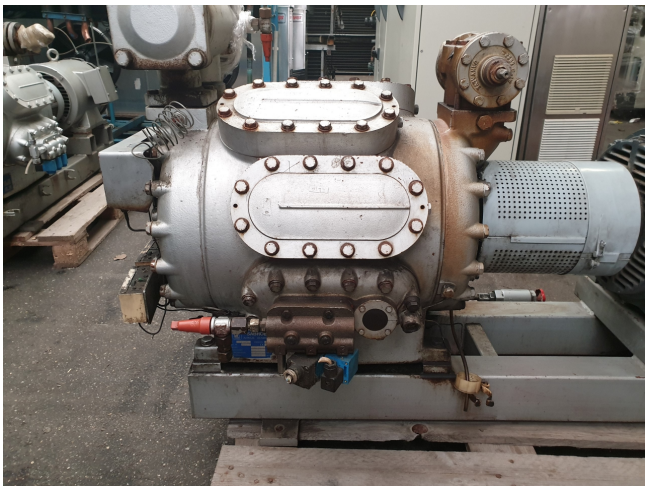
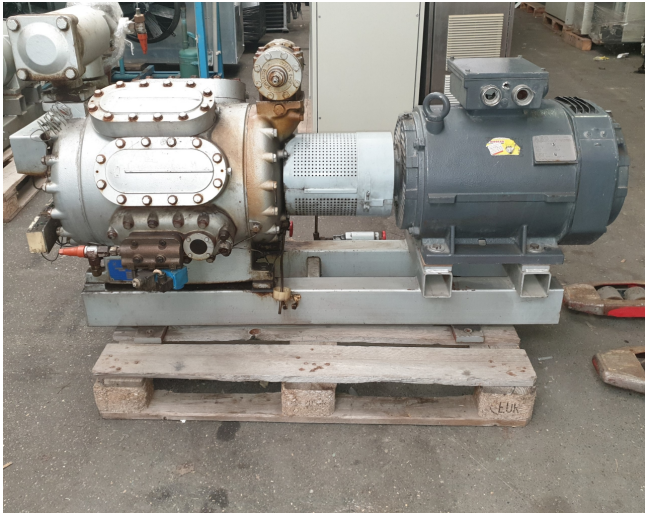
Brand	Sabroe
Type	CMO 28
Refrigerant	NH 3 / Freon
Refrigerant type	R22 or other types
kW at +10°C/+40°C	233
kW at 0°C/+40°C	152
kW at -5°C/+40°C	120
kW at -10°C/+40°C	93
kW at -20°C/+40°C	52
kW at -30°C/+40°C	25
Electromotor Specs	37kW at 1460RPM
On steel base frame	✓
Pressure safety switches	✓
Hp/Lp/Op	
Pressure gauges	✓
Hp/Lp/Op	
Oil level system AC&R	✓
Remarks	capacity based on NH3
Remarks	R22 or other freon types
Sizes	1680x750x920 mm (LxWxH)
Stock	1



Description

Used Sabroe CMO 28

Used Sabroe CMO 28 single-stage reciprocating compressor with electro motor build by AEG with 37kW and 1460RPM at 50 *Why choose for HOSBV? We're not only the largest used refrigeration specialist in Europe, but also, we deliver all equipment including an extensive test, warranty and industrial cleaning. *Optional we can also arrange the logistics.





Model	Number of cylinders	Swept volume at 1500 rpm	Swept volume at 2800 rpm	Nominal capacities in kW at 1500 rpm				Dimensions in mm			Weight excluding motor	Sound pressure level at 1500 rpm (dB(A))
				R123		R404A		Direct coupled unit				
				Single/high stage	Booster	Single/high stage	Single/high stage	L	W	H		
CMO 24	4	97	156	53	85	54	54	1400-2150	800	900	480	69
CMO 26	6	146	175	79	127	21	127	1450-2175	800	900	520	71
CMO 28	8	194	233	105	170	28	105	1475-2200	800	900	550	72
CMO 34	4	113	136	62	100	17	99	1400-2150	800	900	480	70
CMO 36	6	170	204	93	149	25	149	1450-2175	800	900	520	72
CMO 38	8	228	273	123	199	33	198	1475-2200	800	900	550	73

Nominal capacities are based on 1500 rpm and 5K liquid subcooling.
All refrigerants make it possible to operate CMO compressors

01/2015